

Progetto

ADEGUAMENTO SISMICO ALLE NTC 2008  
AUDITORIUM  
LICEO CLASSICO V. JULIA DI ACRI (CS)



PROGETTO PRELIMINARE  
PROGETTO DEFINITIVO  
PROGETTO ESECUTIVO

TAVOLA n°  
6.3a

PROGETTO ESECUTIVO DI ADEGUAMENTO AI SENSI DELLE NTC2008 - CORPO AUDITORIUM  
FONDAZIONI ADEGUATE

Marzo 2019

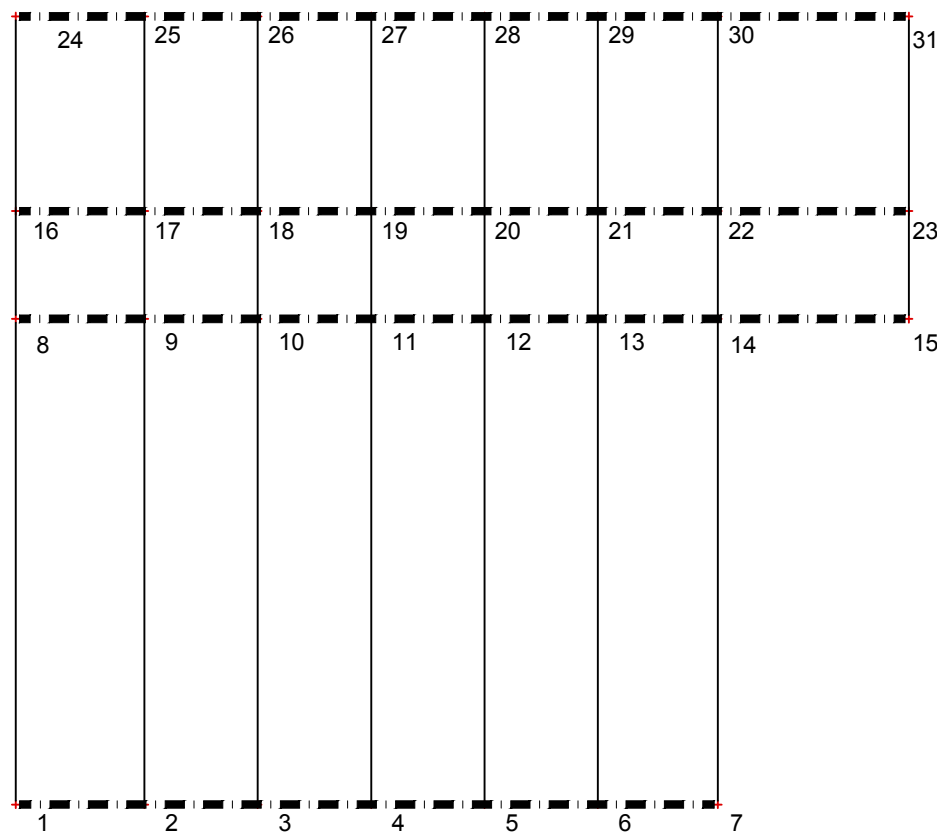
Scala 1:50

Responsabile del procedimento  
ing. Enrico Naccarato

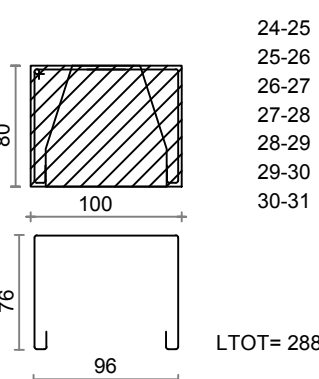
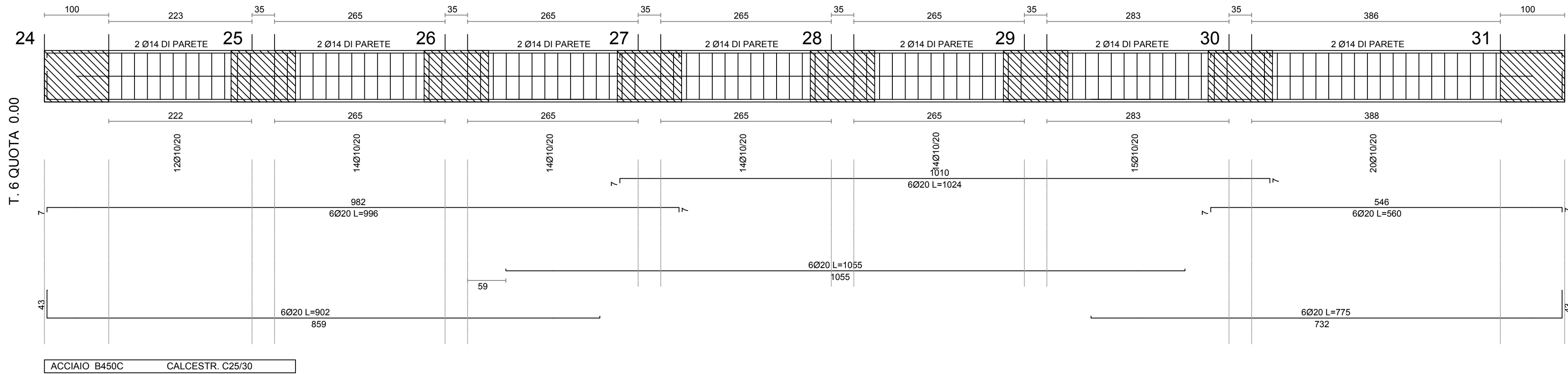
Progettista  
ing. Sergio Pagano

Direttore dei lavori  
ing. Straface Gianluca Salvatore

regione progetto		controllo		approvazione		data
EMISSIONE	REV.1	REV.2				
						marzo 2019

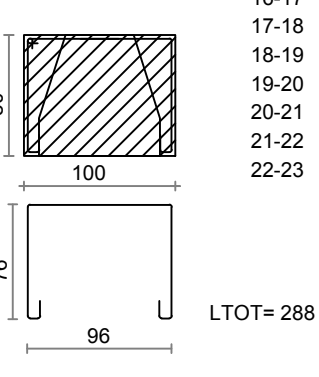
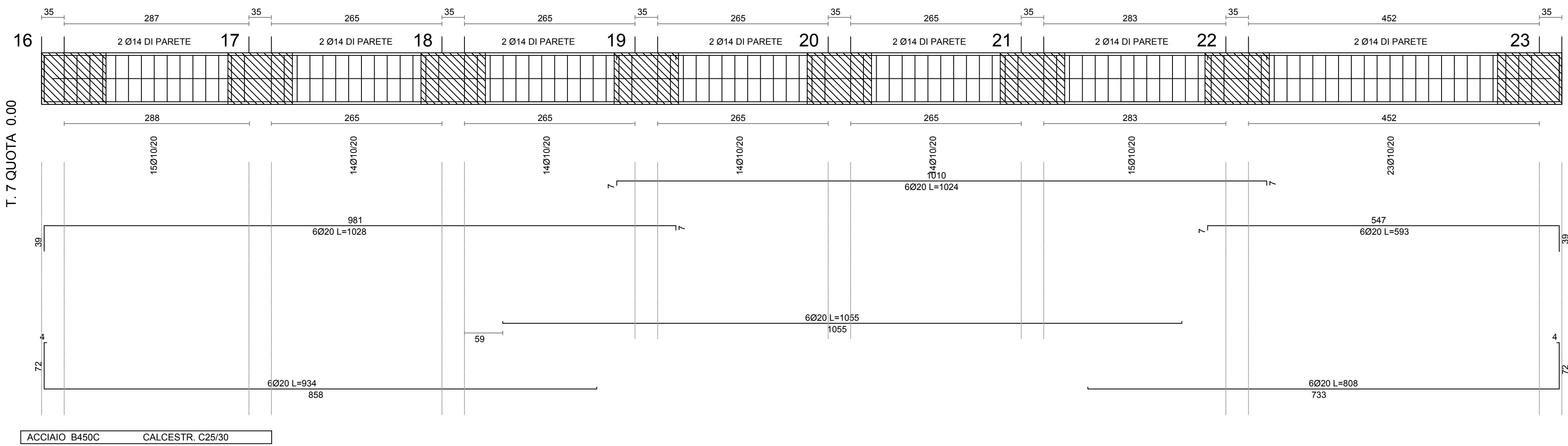


PIANTA FILI FISSI



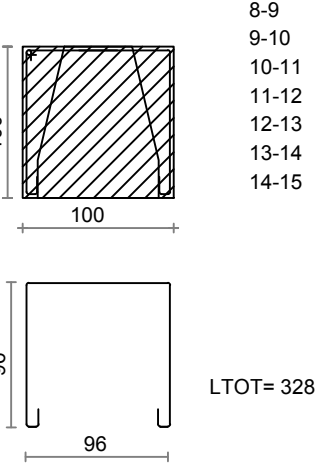
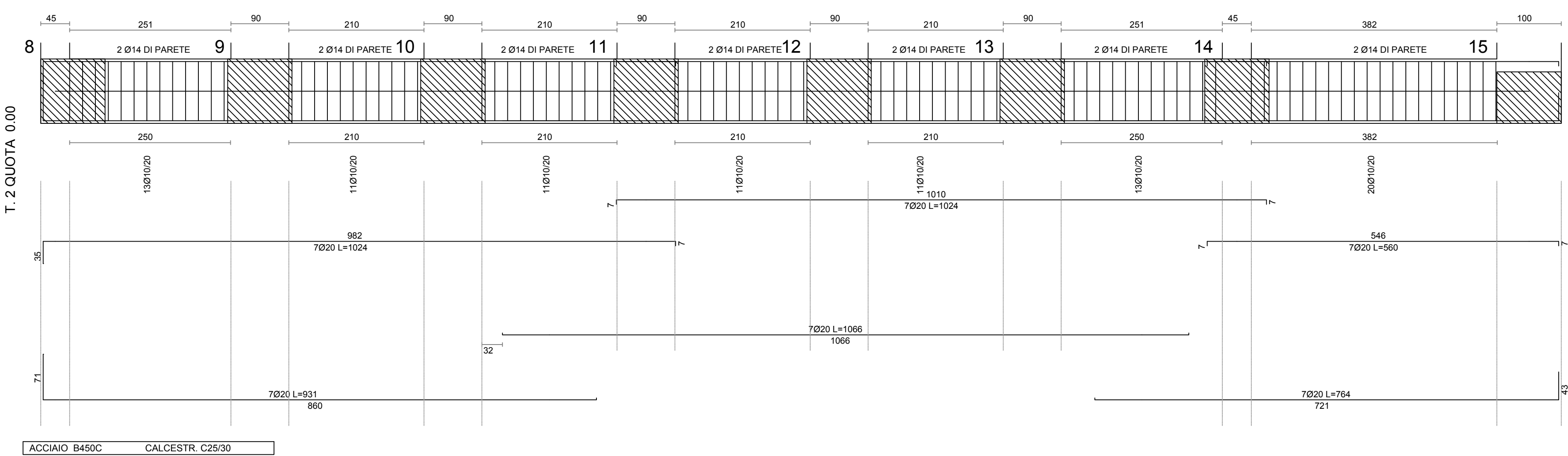
24-26  
26-27  
27-28  
28-29  
29-30  
30-31

LTOT= 288



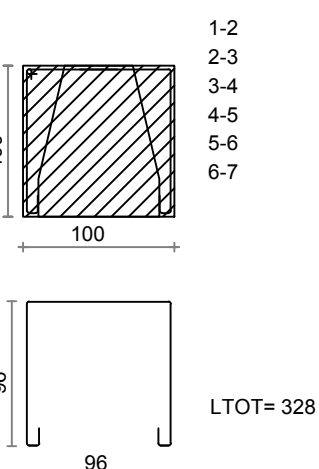
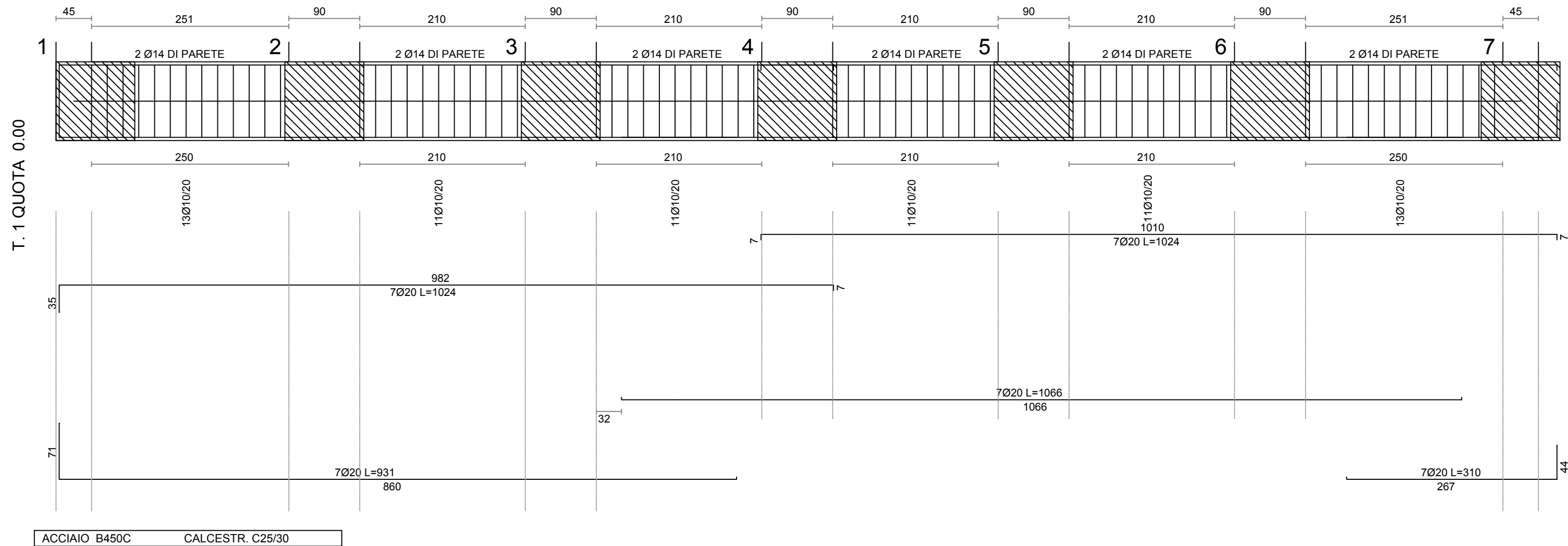
16-17  
17-18  
18-19  
19-20  
20-21  
21-22  
22-23

LTOT= 288



8-9  
9-10  
10-11  
11-12  
12-13  
13-14  
14-15

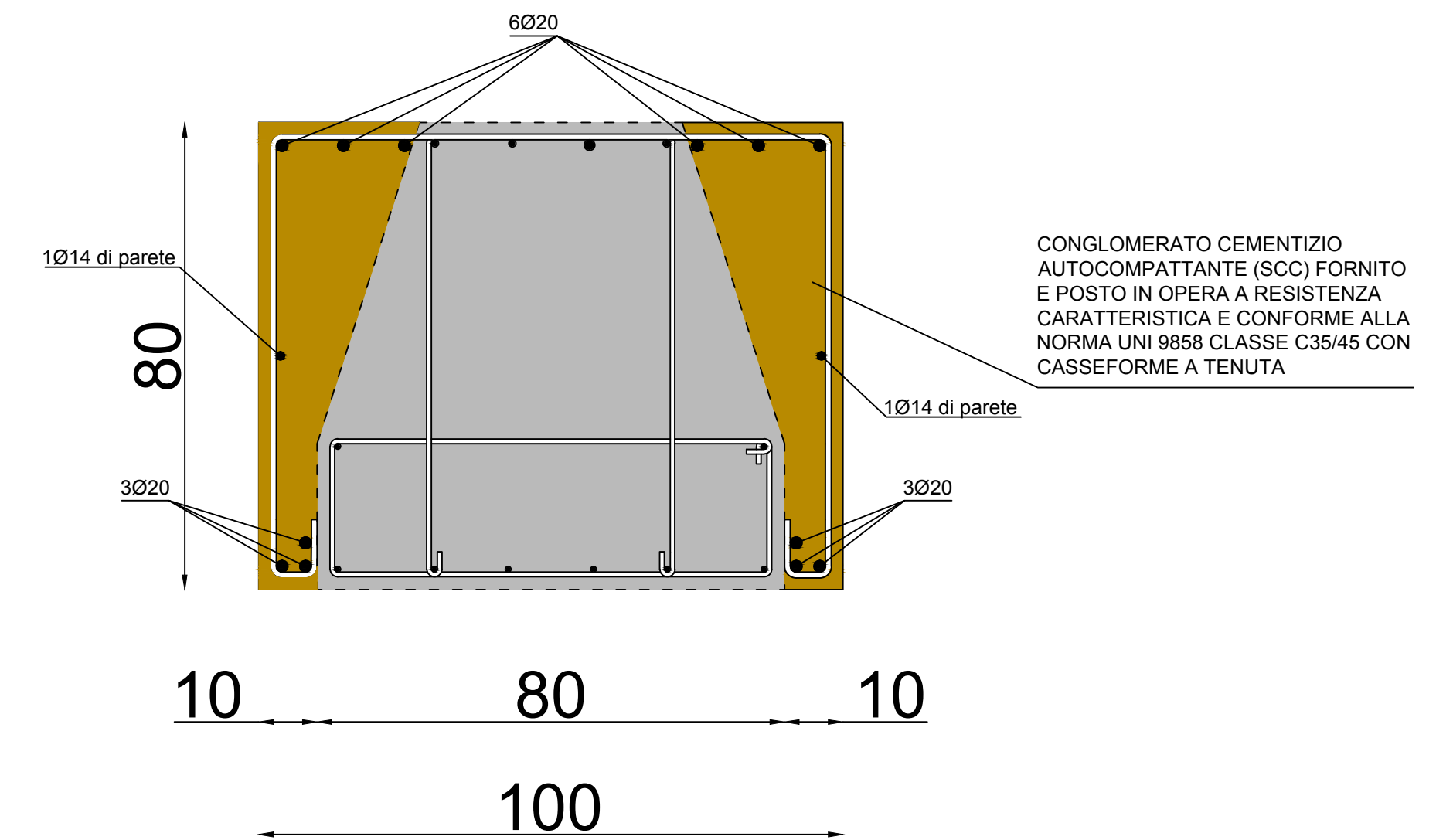
LTOT= 328



1-2  
2-3  
3-4  
4-5  
5-6  
6-7

LTOT= 328

PARTICOLARE RINGROSSO TRAVE DI FONDAZIONE 80X80



PARTICOLARE RINGROSSO TRAVE DI FONDAZIONE 80X100

